

Gift of Gratitude

by Leanne Anderson & Kaytlyn Kuebler



Quilt size: Runner: 64" x 26" (1.63m x 0.66m);
Four Placemats: 20" x 14" each (0.51m x 0.36m)

Skill Level: Intermediate

Grateful Gatherings Table Set

Designed by Leanne Anderson & Kaytlyn Kuebler
www.thewholecountrycaboodle.com

Grateful Gatherings Table Set Ordering Guide

SKU	Yards	Meters	6 Kits	12 Kits
 2526-44	5/8 yds	0.57m	1 bolt	1 bolt
 2528-77	5/6 yds	0.76m	1 bolt	1 bolt
 2529-44*	5/8 yds	0.57m	1 bolt	1 bolt
 2529-77	7/8 yds	0.80m	1 bolt	1 bolt
 2529-88*	1 yd	0.91m	1 bolt	1 bolt
 2530-44	1/8 yds	0.11m	1 bolt	1 bolt
 2532-88	1/4 yds	0.23m	1 bolt	1 bolt
 2533-77	3/8 yds	0.34m	1 bolt	1 bolt
 2534-17	1/2 yds	0.46m	1 bolt	1 bolt
 2535-44	1/8 yds	0.11m	1 bolt	1 bolt
 2537-77	3/4 yds	0.69m	1 bolt	1 bolt
 9611-88*	5/8 yds	0.57m	1 bolt	1 bolt
 2769-77	1/8 yds	0.11m	1 bolt	1 bolt
 7755-63 (10yd bolt)	1/8 yds	0.11m	1 bolt	1 bolt
 8624-88*	1/2 yds	0.46m	1 bolt	1 bolt
 8294-04	1/4 yds	0.23m	1 bolt	1 bolt
 8294-44	1/8 yds	0.11m	1 bolt	1 bolt
 8294-88*	5/8 yds	0.57m	1 bolt	1 bolt

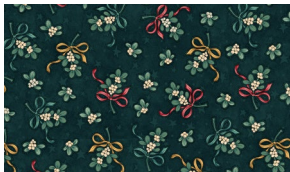
Backing Fabric Option

2536-41	3 5/8 yds	3 1/3m	2 bolts	3 bolts
---------	-----------	--------	---------	---------

* Indicates binding fabric. *Each piece uses a different fabric for the binding.
FO = 18" x 22" (0.45m x 0.55m)
All fabric quantities are based on 15yd bolts unless otherwise indicated.



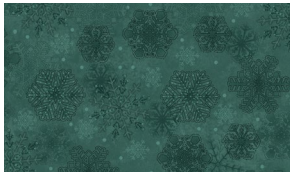
2526-44
Holly Leaves
Cream



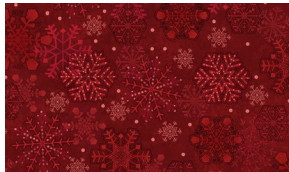
2528-77
Mistletoe Toss
Teal



2529-44*
Snowflakes
Cream



2529-77
Snowflakes
Teal



2529-88*
Snowflakes
Red



2530-44
Tossed Stockings
Cream



2532-88
Christmas Trees
Red



2533-77
Ornaments
Teal



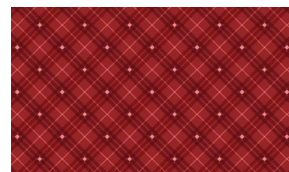
2534-17
Poinsettias Toss
Light Teal



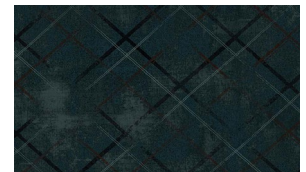
2535-44
Fireplace Toss
Cream



2537-77
Border Stripe
Teal



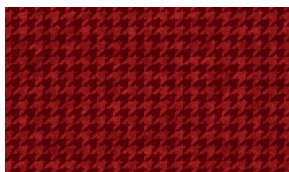
9611-88*
Bias Plaid Basics
Red



2769-77
One Sister Basics
Navy



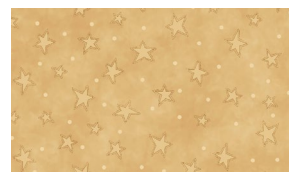
7755-63
Folio Basics
Dusty Sage



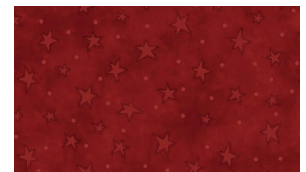
8624-88*
Houndstooth Basics
Red



8294-04
Starry Basics
Cream



8294-44
Starry Basics
Tan



8294-88*
Starry Basics
Red